



PAINT CAN COVER

BY: DECLAN, GABRIELLA, & DEVON

DESIGN PROCESS:

Identify the Problem: paint cans are too easy to open and tamper with; easily spilled.

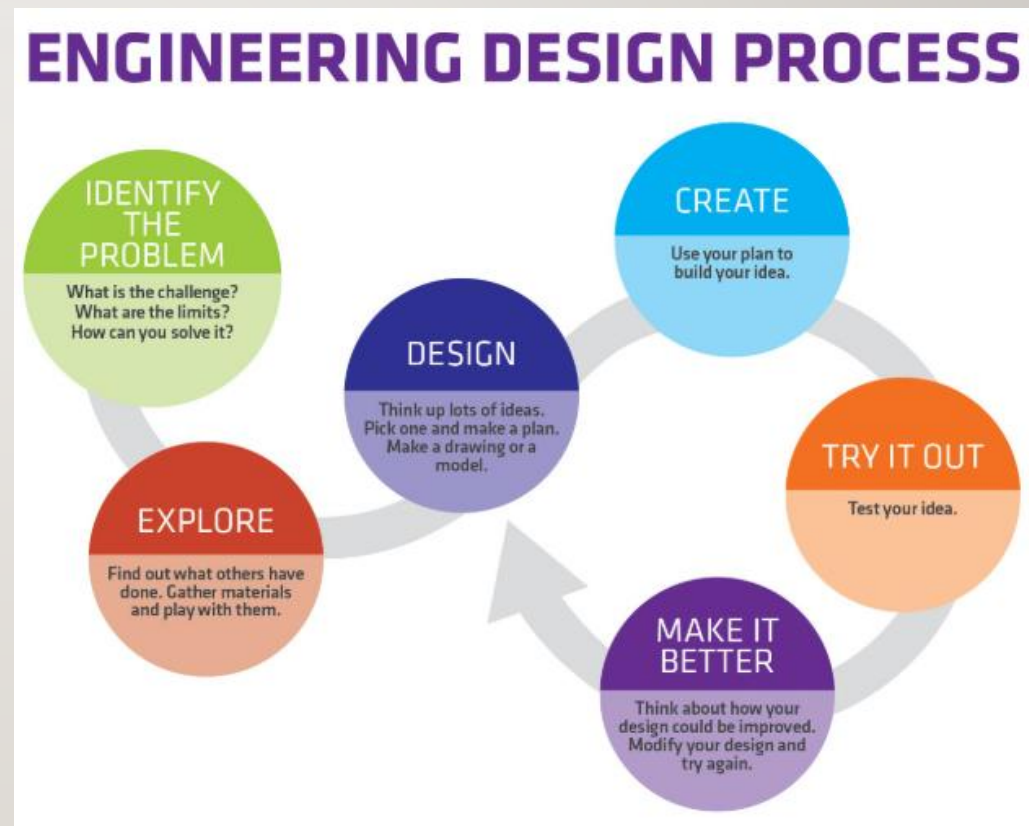
Explore: looked for patents and dimensions of paint cans.

Design: lid with tray to catch spilled paint & prevent the lid to be opened easily.

Create: made 3-D model on Inventor & 3-D printed it.

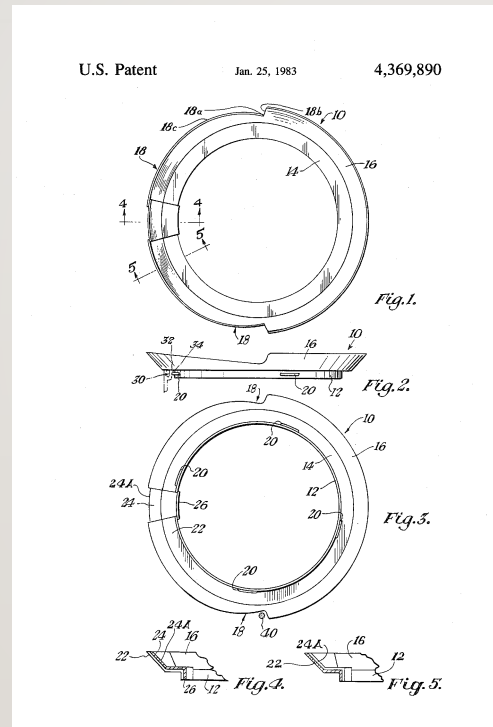
Try It Out: brought in a 1 gallon paint can to test our product out.

Make It Better: We had to make the interior diameter larger to fit around the paint can better. Also, to make it so the handle works.

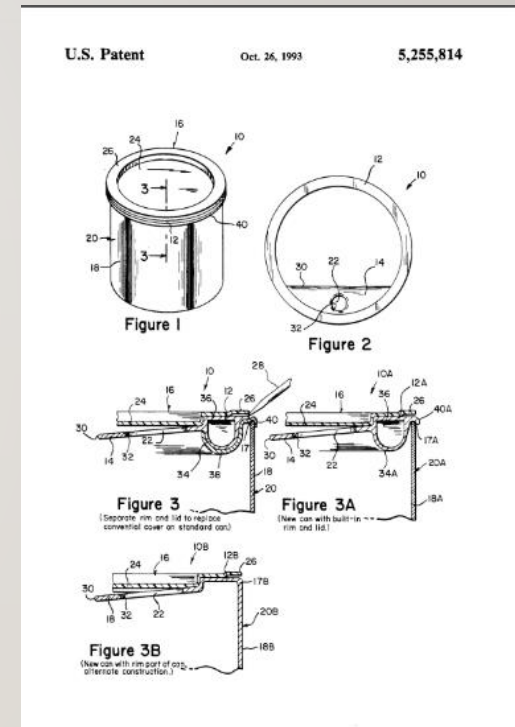


PATENTS:

Paint Can Collar:
Any dripping paint goes
back into can + prevents
paint from drying in
grooves.

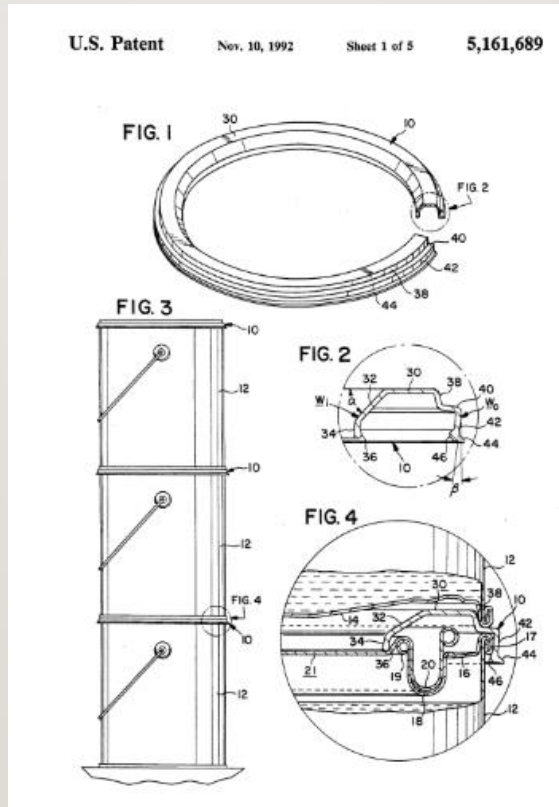


Paint Can Rim:
This has a pour
hole and also
acts to be able
to funnel paint
from brush
back into can.

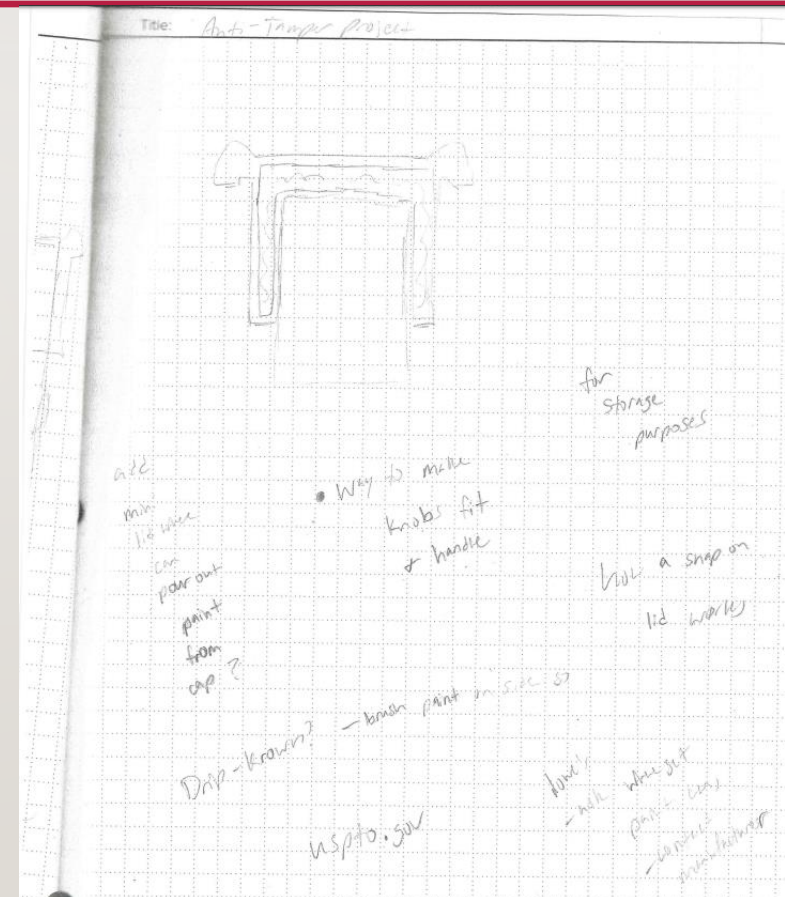
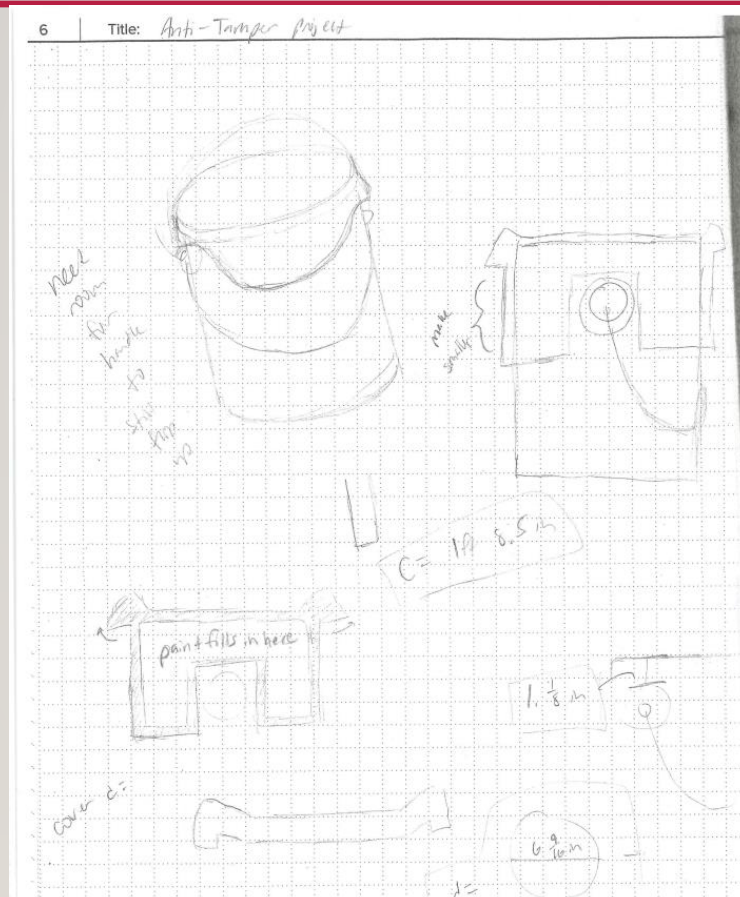


PATENTS:

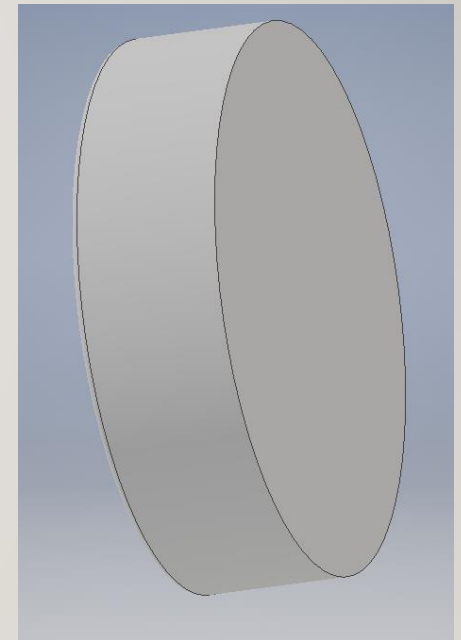
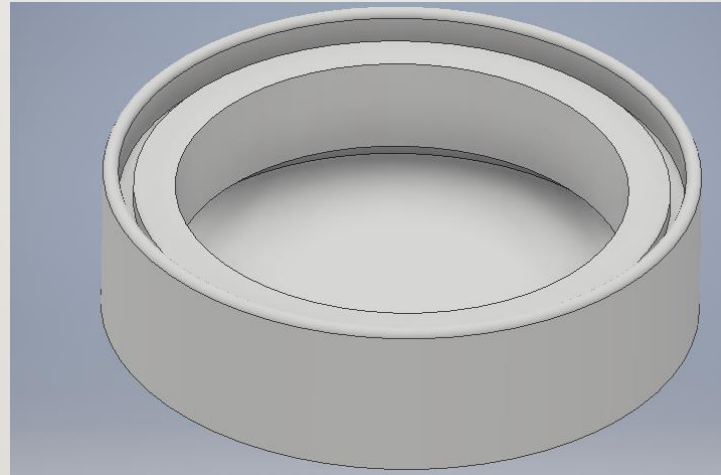
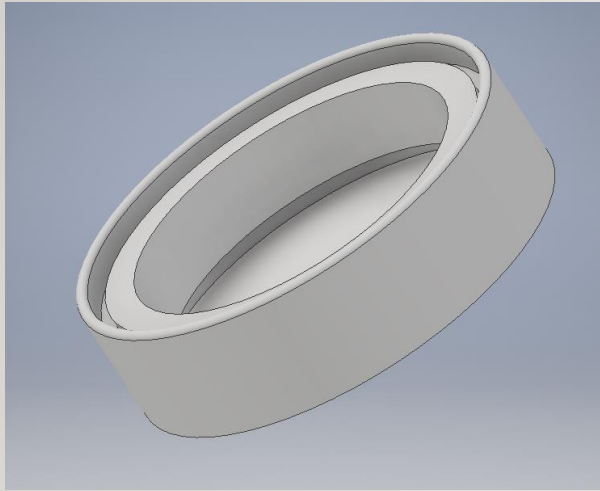
Rim seal for paint
can lid:
Meant to be able to
stack easily and seal
the top of the can.



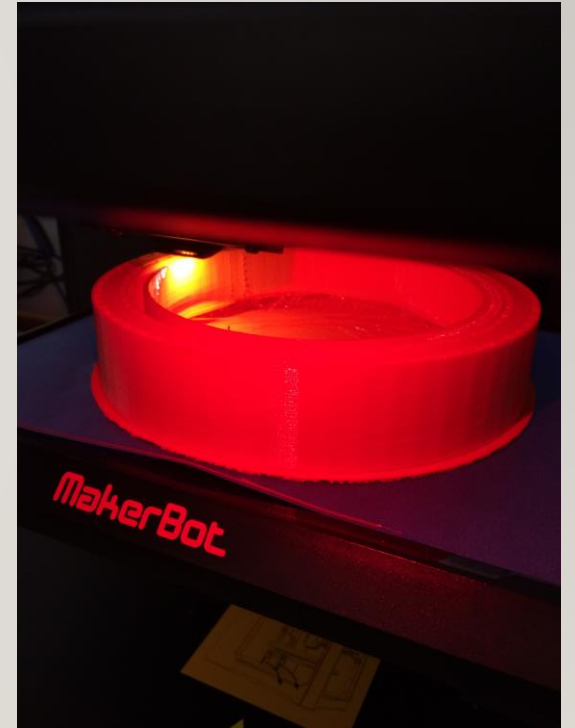
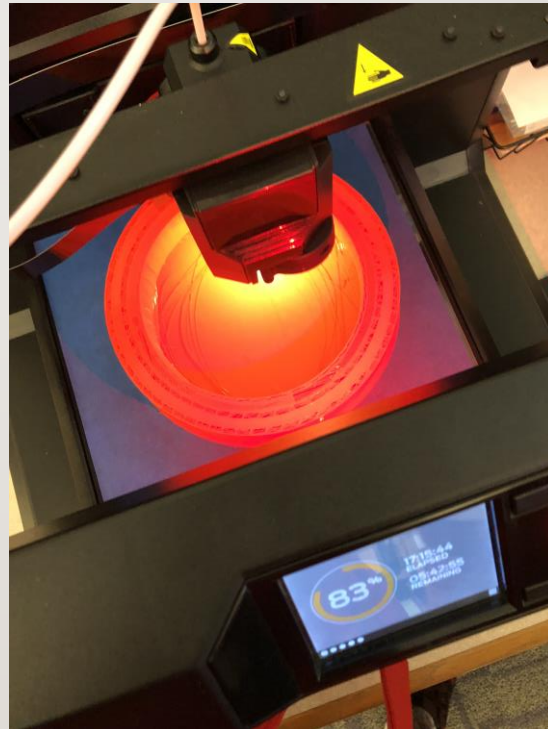
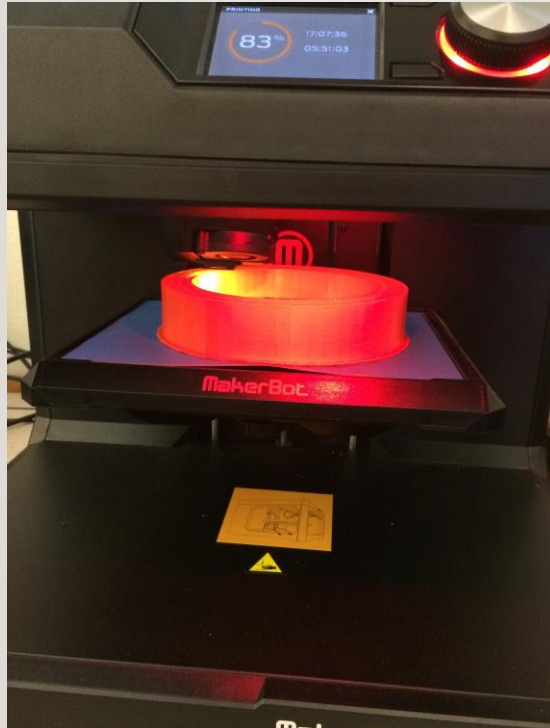
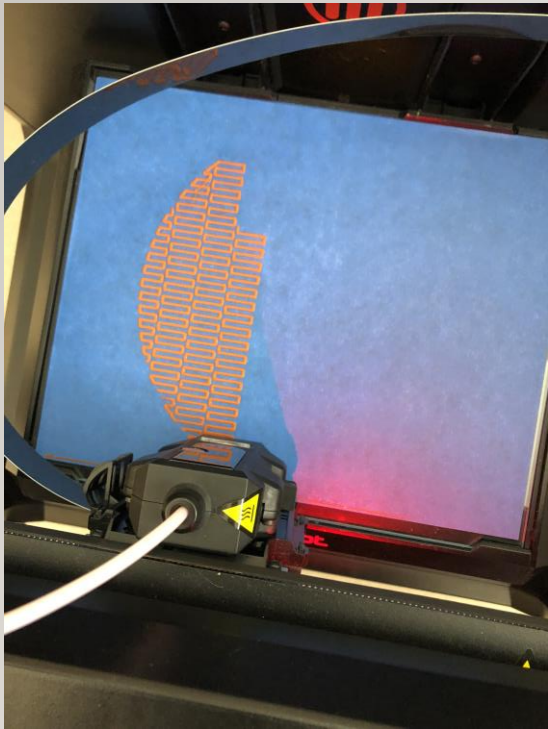
SKETCHES:



RENDERINGS:



PICTURES OF PROGRESSION:



GROUP PHOTOS:

